

Systems for your life...



CONNECTORS / CAPS



Innovative plastic products and systems for medicine and technology



Y-CONNECTOR WITH PREASURE AND TEMERATURE PORT

REF 700/22152

Material: SB, blue, transparent

Connection: 22M/22M/22M-15F

Packaging: 150 pcs.



Y-CONNECTOR

REF 700/22150

Material: SB, blue, transparent

Connection: 22M/22M/22M-15F

Packaging: 200 pcs.



TRACHEOSTOMY CONNECTOR

REF 700/22154

Material: SB, transparent

Connection: 22M/22M-15F

Packaging: 450 pcs.

REF 700/22155

Packaging: 250 pcs., non-sterile, single packed



ANGEL CONNECTOR

REF 700/22220

Material: PE-HD, natural colour

Connection: 22F/22M

Packaging: 500 pcs.



CONNECTOR

REF 855/15122

Material: SB, transparent

Connection: 15M/22M

Packaging: 1.000 pcs.



CONNECTOR

REF 855/22150

Material: SB, transparent

Connection: 22M/22M/22M-15F

Packaging: 1.000 pcs.



Endotracheal Connector 8 mm

REF 855/22108

Material: SB, transparent

Connection: 22F_8mm

Packaging: 1.000 pcs.



FLEXIBEL CONNECTOR

REF 755/35145

Material: TPE, natural colour

Connection: 15F/15F

Packaging: 1.000 pcs.



EINWEG STEUERVENTIL (CONTROL VALVE)

REF 700/19200

Material: PE-LD / SI, natural colour

for installation in the Y-Connector 700/22150

Packaging: 1.000 pcs.



STEP CONNECTOR

REF 1010/68484

Material: PVC, natural colour

for hose AD 6.8 mm or ID 9.9 mm

Packaging: 100 pcs.



STEP CONNECTOR

REF 1010/68482

Material: PVC, natural colour

for hose AD 4.6 mm or ID 9.9 mm

Packaging: 100 pcs.



TUBE CONNEKTOR

REF 855/08050

Material: SB, transparent

Anschluss: 8 mm

Packaging: 100 pcs.



CAP

REF 700/15150

Material: PE-LD, red

Connection: 15M

VPE: 500 pcs.



FINGERTIP

REF 700/00201

Material: PVC, transparent

sterile, individually packaged

Packaging: 100 pcs.



CAP WHITE

REF 700/22000

Material: PE-LD, white

Connection: 22F

Hole: D=6.2 mm

Packaging: 1.000 pcs.



CAP YELLOW

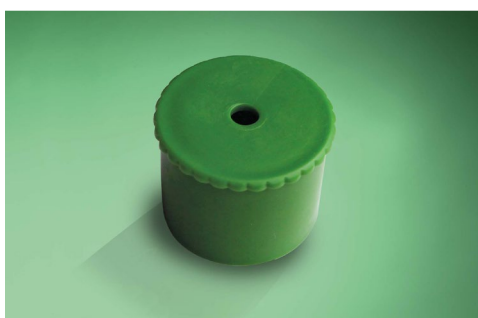
REF 700/22001

Material: PE-LD, yellow

Connection: 22F

Hole: D=5.0 mm

Packaging: 1.000 pcs.



CAP GREEN

REF 700/22002

Material: PE-LD, green

Connection: 22F

Hole: D=4.2 mm

Packaging: 1.000 pcs.



CAP RED

REF 700/22004

Material: PE-LD, red

Connection: 22F

Hole: D=3.2 mm

Packaging: 1.000 pcs..



SEALING CAP FOR VENTILATION SYSTEMS

REF 700/22003

Material: PE-LD, red

Connection: 22F

Hole: without

Packaging: 1.000 pcs.



HOSE CONNECTOR

REF 1010/13106

Material: PA, white

Size: 10/13

Packaging: 100 pcs.



HOSE CONNECTOR

REF 1010/40460

Material: PA, white

Size: 4/4

Packaging: 100 pcs.



HOSE CONNECTOR

REF 1010/40770

Material: PA, white

Size: 4/7

Packaging: 100 pcs.



HOSE CONNECTOR

REF 1010/70760

Material: PA, white

Size: 7/7

Packaging: 100 pcs.



HOSE CONNECTOR

REF 1010/71060

Material: PA, white

Size: 7/10

Packaging: 100 pcs.

INQUIRY ☐ ORDER

Company

Adress

Fon

Fax

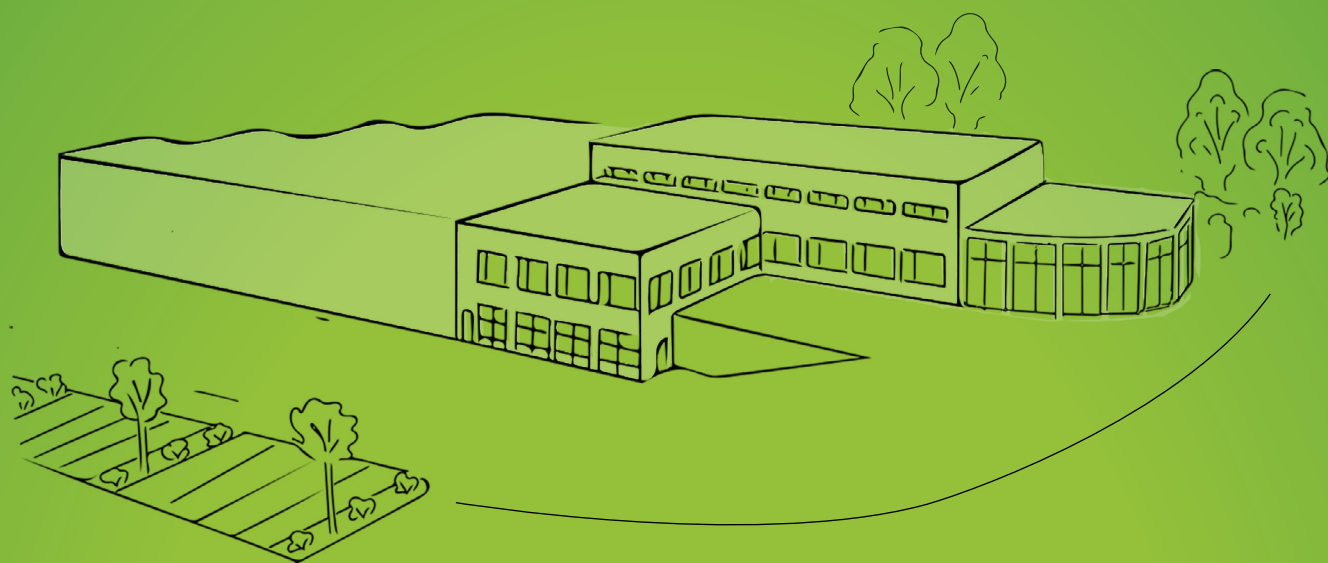
Name _____

Zip, City

E-Mail

[illegible]

Date, signature



SEM-Plastomed GmbH
Medizin- und Kunststofftechnik
Schulstr. 6
D-57612 Obererbach
Fon: +49 (0) 2681 - 95 07 80
Fax: +49 (0) 2681 - 95 07 818
info@plastomed.de
www.plastomed.de

